

STANDARD DEPARTURE  
CHART - INSTRUMENT  
(SID) - ICAO

TRANSITION ALTITUDE  
10000 FT

ZHEZKAZGAN TOWER 127.1  
ZHEZKAZGAN ATIS (EN) 131.4  
ZHEZKAZGAN ATIS (RU) 122.4

ABURA 2A, ADOKA 2A, ADRIK 2A,  
AMASO 2A, ARMIK 2A, ASLIK 2A,  
BEDOR 2A, BETIK 2A, BURIK 2A,  
DINBO 2A, DITSO 2A, DOPAR 2A,  
LEMDO 2A, REMTI 2A, RINUR 2A.

ZHEZKAZGAN  
RWY 04

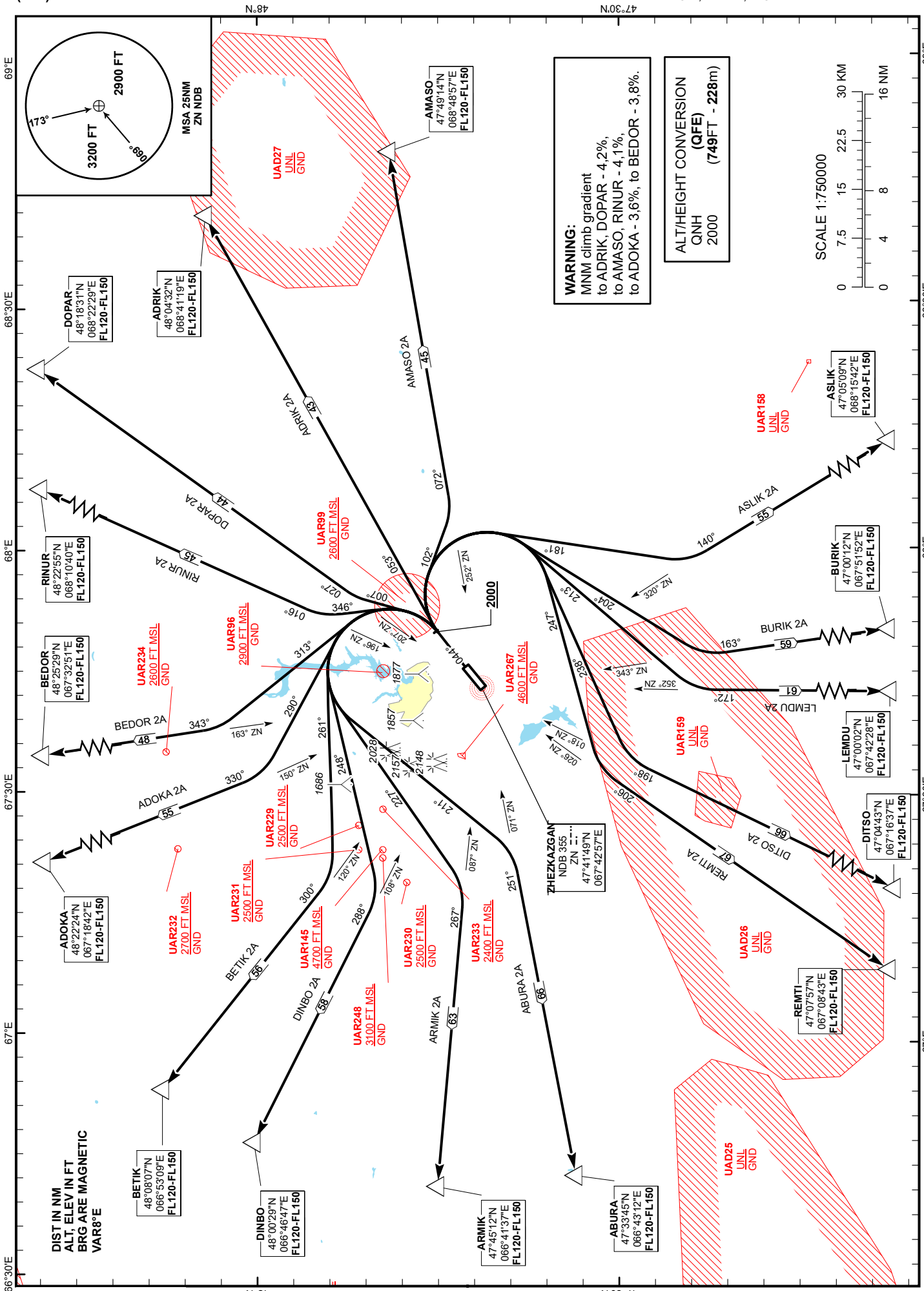
CHANGE: MSA, obstacles, add ATIS.

DIST IN NM  
ALT, ELEV IN FT  
BRG ARE MAGNETIC  
VAR8°E

**WARNING:**  
MNM climb gradient  
to ADRIK, DOPAR - 4.2%,  
to AMASO, RINUR - 4.1%,  
to ADOKA - 3.6%, to BEDOR - 3.8%.

**ALT/HEIGHT CONVERSION  
(QFE)**  
QNH  
2000  
(749FT - 228m)

SCALE 1:750000  
0 7.5 15 22.5 30 KM  
0 4 8 16 NM



| STANDARD DEPARTURE ROUTES – INSTRUMENT (SID) ZHEZKAZGAN RWY 04   |  |
|--|--|
| <b>RINUR 2A</b><br>After take-off climb straight ahead to 2000 or above. Turn LEFT on track 346° until intercept bearing 196°ZN, then proceed on track 016° to RINUR (N482255 E0681040).<br>Cross RINUR at FL120 - FL150.  | <b>REMTI 2A</b><br>After take-off climb straight ahead to 2000 or above. Turn RIGHT on track 247° until intercept bearing 026°ZN, then proceed on track 206° to REMTI (N470757 E0670843).<br>Cross REMTI at FL120 - FL150. |
| <b>DOPAR 2A</b><br>After take-off climb straight ahead to 2000 or above. Turn LEFT on track 007° until intercept bearing 207°ZN, then proceed on track 027° to DOPAR (N481831 E0682229).<br>Cross DOPAR at FL120 - FL150.  | <b>ABURA 2A</b><br>After take-off climb straight ahead to 2000 or above. Turn LEFT on track 211° until intercept bearing 071°ZN, then proceed on track 251° to ABURA (N473345 E0664312).<br>Cross ABURA at FL120 - FL150.  |
| <b>ADRIK 2A</b><br>After take-off climb straight ahead to 2000 or above. Turn RIGHT on track 053° to ADRIK (N480432 E0684119).<br>Cross ADRIK at FL120 - FL150.  | <b>ARMIK 2A</b><br>After take-off climb straight ahead to 2000 or above. Turn LEFT on track 227° until intercept bearing 087°ZN, then proceed on track 267° to ARMIK (N474512 E0664137).<br>Cross ARMIK at FL120 - FL150.  |
| <b>AMASO 2A</b><br>After take-off climb straight ahead to 2000 or above. Turn RIGHT on track 102° until intercept bearing 252°ZN, then proceed on track 072° to AMASO (N474914 E0684857).<br>Cross AMASO at FL120 - FL150. | <b>DINBO 2A</b><br>After take-off climb straight ahead to 2000 or above. Turn LEFT on track 248° until intercept bearing 108°ZN, then proceed on track 288° to DINBO (N480029 E0664647).<br>Cross DINBO at FL120 - FL150.  |
| <b>ASLIK 2A</b><br>After take-off climb straight ahead to 2000 or above. Turn RIGHT on track 181° until intercept bearing 320°ZN, then proceed on track 140° to ASLIK (N470509 E0681542).<br>Cross ASLIK at FL120 - FL150. | <b>BETIK 2A</b><br>After take-off climb straight ahead to 2000 or above. Turn LEFT on track 261° until intercept bearing 120°ZN, then proceed on track 300° to BETIK (N480807 E0665309).<br>Cross BETIK at FL120 - FL150.  |
| <b>BURIK 2A</b><br>After take-off climb straight ahead to 2000 or above. Turn RIGHT on track 204° until intercept bearing 343°ZN, then proceed on track 163° to BURIK (N470012 E0675152).<br>Cross BURIK at FL120 - FL150. | <b>ADOKA 2A</b><br>After take-off climb straight ahead to 2000 or above. Turn LEFT on track 290° until intercept bearing 150°ZN, then proceed on track 330° to ADOKA (N482224 E0671842).<br>Cross ADOKA at FL120 - FL150.  |
| <b>LEMDU 2A</b><br>After take-off climb straight ahead to 2000 or above. Turn RIGHT on track 213° until intercept bearing 352°ZN, then proceed on track 172° to LEMDU (N470002 E0674228).<br>Cross LEMDU at FL120 - FL150. | <b>BEDOR 2A</b><br>After take-off climb straight ahead to 2000 or above. Turn LEFT on track 313° until intercept bearing 163°ZN, then proceed on track 343° to BEDOR (N482529 E0673251).<br>Cross BEDOR at FL120 - FL150.  |
| <b>DITSO 2A</b><br>After take-off climb straight ahead to 2000 or above. Turn RIGHT on track 238° until intercept bearing 018°ZN, then proceed on track 198° to DITSO (N470443 E0671637).<br>Cross DITSO at FL120 - FL150. |  |